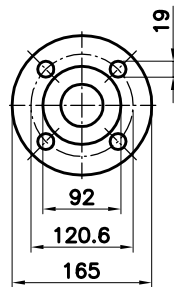


● DN 50 PN 16 (+F)



⊕ 2" ASA 150 R.F. (+FA)

\*I valori min./max. sono indicativi in funzione della marca del motore utilizzato

\*Minimum/maximum dimensions depending on the make of motor used

4	PIEDE MOTORE/MOTOR BASE	VARISCO	230x180x38 sp.3	DIS.B80.0014	1
3	MOTORE/A.C. MOTOR		JMC 112/7,5HP-5,5kW	380-660 V./50Hz/2P	1
2	TENUTA/SEAL		T 30		1
1	POMPA/PUMPS	VARISCO	J 2-180 TWG, TWQ, TWB		1
POS	DESCRIZIONE/DESCRIPT	FORNITORE/SUPPLIER	TIPO/TYPE	NOTE/NOTES	Q.

**VARISCO®**  
a solid name in fluids

COMPANY  
WITH QUALITY SYSTEM  
CERTIFIED BY DNV  
ISO 9001

Tipo / Type  
**J 2-180 TWGMC3, TWQMC3  
TWBMC3 (+F), (+FA)**

Sost.it/Repl.N°

Sost.Dal/Repl.from

Dis.n. / Dwg No.

**B3/10.000.H.03**

Approv.

Ver.

Dis.

17.04.01

I.Zulian

Data / Date

Firma/Signature

Codice / Code

**DIMENSIONI D'INGOMBRO / OVERALL DIMENSIONS**